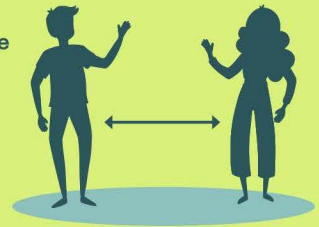




**We can all help support Chepstow's wonderful independent businesses by shopping locally. Recently you will have noticed a few changes in the town. Monmouthshire County Council has been working to put measures in place that are designed to keep you safe. In response to feedback, amendments are being made.**

## What's different?

- To maximise opportunities for social distancing, High Street is fully pedestrianised between 10am and 4pm, with no vehicle access other than Blue Badge holders, who will be permitted to access disabled parking bays. Vehicle access outside those hours is for deliveries only. This order is to be amended to be consistent with the arrangements on St Marys Street and will offer space for additional pavement café areas
- Social distancing signage and attractive banners encouraging everyone to Shop Local, Shop Monmouthshire
- A pedestrian 'keep left' system is promoted on High Street, with a one-way system at Town Arch and a new crossing point provided to cross to Welsh Street
- Traffic calming measures on Station Road and additional crossing facilities will ensure connectivity for pedestrians from High Street to St Mary Street and will open up Beaufort Square
- Cycle stands will be provided in key areas
- Access over Chepstow Bridge will be limited to less than 3 vehicles at any one time and a maximum of 3T but fully open for cyclists and pedestrians. Monitoring equipment will be installed to assist engineers with the future management arrangements of the structure
- In Bulwark, shoppers are encouraged to use the free MCC car park at the Severn View Social Centre as an alternative to parking in the service road at the front of the shops to allow more space for social distancing
- A 20mph zone will be introduced covering the whole of Chepstow except A466 and A48, with speed reduction measures at entrance points



## Why now?

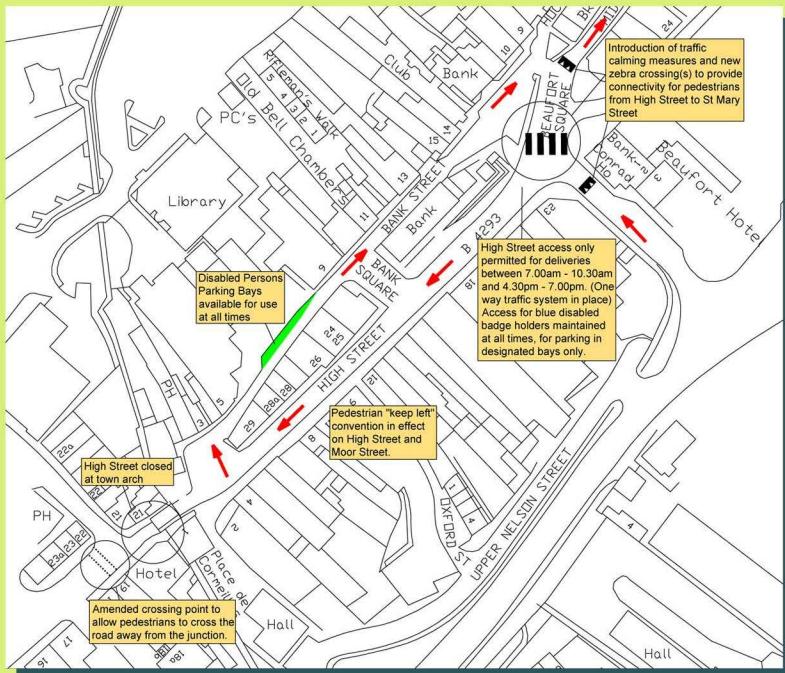
The aim is to give residents and visitors confidence to return to the centre of town while keeping them safe and be able to observe social distancing and to accommodate queuing outside some shops. Now more premises are reopening, shoppers will be returning for goods and services. Food and drink businesses re-opening again, some of which may wish to use the areas outside their business for tables and chairs. By shopping locally, we can all help revitalise businesses severely affected by the pandemic. We also want people to feel safe walking and cycling instead of using their car, where they can, reducing congestion and carbon emissions.



# How does this help Chepstow's Businesses?

Business survival depends on customers supporting them, so the council is seeking to assist by making sure shoppers can safely visit Chepstow with social distancing as well as allowing opportunities to have outdoor pavement seating. Businesses can apply for outdoor "Café Space" via MyMonmouthshire on the council's website. For more information and the latest updates for shoppers and advice for businesses visit [www.monmouthshire.gov.uk/shop-local](http://www.monmouthshire.gov.uk/shop-local)

## What's the plan?



## We want your feedback

All changes are part of a trial. We will be seeking live feedback and will add to, change or remove measures as appropriate, adapting and improving as we go. If some of the changes are successful, we will consider making them permanent, following future consultation. We welcome feedback from everyone. Simply go to the website below and send your comments via the MyMonmouthshire button on the bottom right hand side of the page, or by emailing [contact@monmouthshire.gov.uk](mailto:contact@monmouthshire.gov.uk). Residents who are not online may call the Contact Centre on 01633 644644 if they have any feedback or questions.

