



# Wentwood and Gray Hill

*Wales's Largest Ancient Woodland*

## Distance and Timings

Length of Walk: 7.6 miles - 12.2km

Approximate time taken to walk route: 4½ Hours

## References

Start: Cadira Beeches Car Park, Wentwood (Grid Reference: ST 422 949)

Ordnance Survey Map: OS Explorer 1:25 000 Sheet OL14 Wye Valley & Forest of Dean

## Facilities Available

Parking at Forestry Commission car park – Cadira Beeches

Alternative parking at picnic site – Foresters Oaks

No public toilets or other facilities available on walk.

## Accessibility / Terrain

No of Stiles: 8

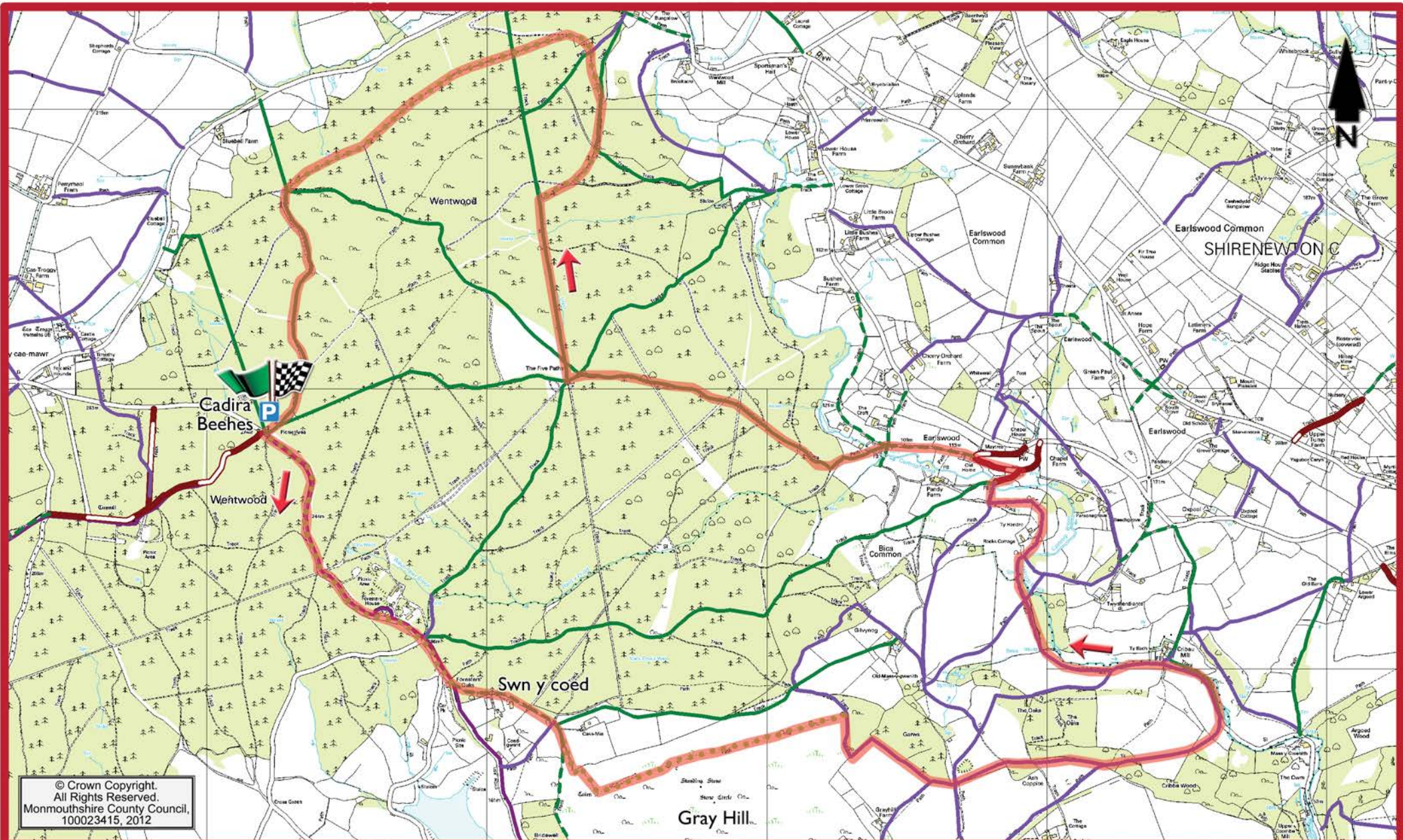
A strenuous walk with a number of steep ascents and descents.



## Brief Route Details / Points of Particular Interest

The route starts at the Cadira Beeches car park and follows the road down to Foresters Oaks picnic site, from where it climbs steeply up to the top of Gray Hill. It then drops down into the Castroggi Brook valley and follows the brook upstream before entering Wentwood Forest from the east. The route then follows forestry tracks to Five Ways before looping around to the north and returning back to Cadira Beeches.

Points of interest include the views from Gray Hill and its standing stones, the ancient forest of Wentwood.



© Crown Copyright.  
All Rights Reserved.  
Monmouthshire County Council,  
100023415, 2012



- : Start
- : Finish
- : Direction
- : Footpath
- : Bridleway
- : Permissive Path
- : Promoted Route
- : Unclassified Road
- : Parking

This route is regularly checked by  
Monmouthshire Countryside Service Volunteers  
but if you find any problems please email  
[rightsofway@monmouthshire.gov.uk](mailto:rightsofway@monmouthshire.gov.uk)  
Enjoy your walk.



monmouthshire  
sir fynwy



Cyngor Cefn Gwlad Cymru  
Countryside Council for Wales



Noddir gan  
Llywodraeth Cymru  
Sponsored by  
Welsh Government