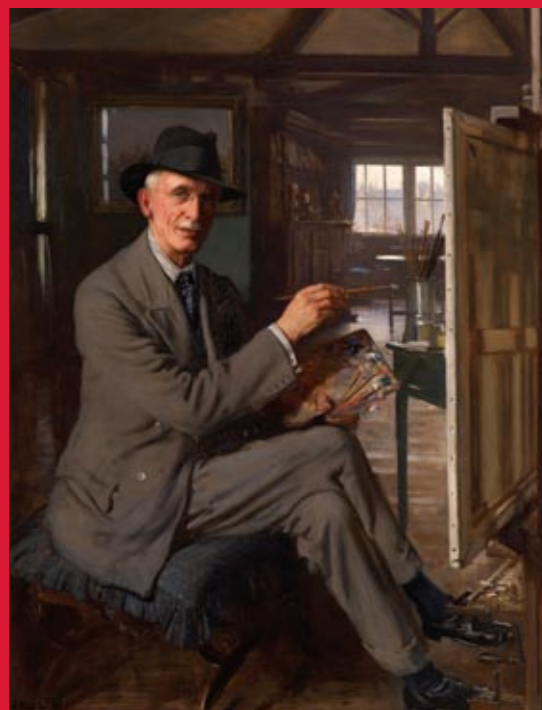


Paint the town  
Fred & Mary

Discover the paintings of Fred and Mary Elwell as you walk through the centre of Beverley...



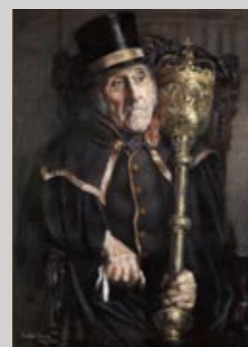
Frederick W. Elwell R.A. (1870-1958) *Self-Portrait*, 1933



Frederick W. Elwell R.A. (1870-1958) *Old Man with a Pipe*, 1898



Frederick W. Elwell R.A. (1870-1958) *Seated Nude in the Studio (or The Model)*, 1935



Frederick W. Elwell R.A. (1870-1958) *George Monkman, Mace Bearer of Beverley*, 1890



Frederick W. Elwell R.A. (1870-1958) *The Launch*, undated



Frederick W. Elwell R.A. (1870-1958) *Harvest Festival Gifts*, undated



Mary Elwell s.w.A. (1874-1952) *Beverley Minster From the Friary*, 1934



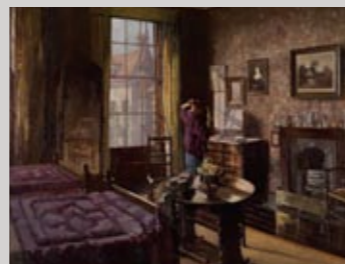
Frederick W. Elwell R.A. (1870-1958) *Girl with a Kitten*, undated



Frederick W. Elwell R.A. (1870-1958) *The Birthday Party*, 1934



Frederick W. Elwell R.A. (1870-1958) *Refugees in my Studio*, 1940



Mary Elwell s.w.A. (1874-1952) *At the Mirror (or Bedroom Bar House)*, undated



Frederick W. Elwell R.A. (1870-1958) *The Last Cab*, c.1931-36



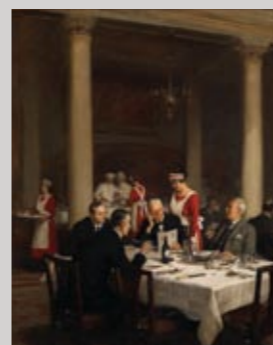
Frederick W. Elwell R.A. (1870-1958) *Preparations*, c.1940-45



Frederick W. Elwell R.A. (1870-1958) *Three Maids*, c.1940-45



Frederick W. Elwell R.A. (1870-1958) *A Wheelwright's Shop*, 1941



Frederick W. Elwell R.A. (1870-1958) *Four Friends*, 1920s



Frederick W. Elwell R.A. (1870-1958) *Maids with Pigeons (or Hilda and Mary)*, 1918



Frederick W. Elwell R.A. (1870-1958) *The Butler Takes A Glass of Port (or All Things Come To Those Who Wait)*, 1890



Frederick W. Elwell R.A. (1870-1958) *Leonie's Toilette (or Dolls)*, 1894



Frederick W. Elwell R.A. (1870-1958) *The Police Court*, 1938



Frederick W. Elwell R.A. (1870-1958) *Brick Bridge, Swine Moor*, c.1939-45



Frederick W. Elwell R.A. (1870-1958) *John Edward Champney*, 1906



Born in Beverley in 1870, the painter Fred Elwell trained at the Lincoln School of Art and the

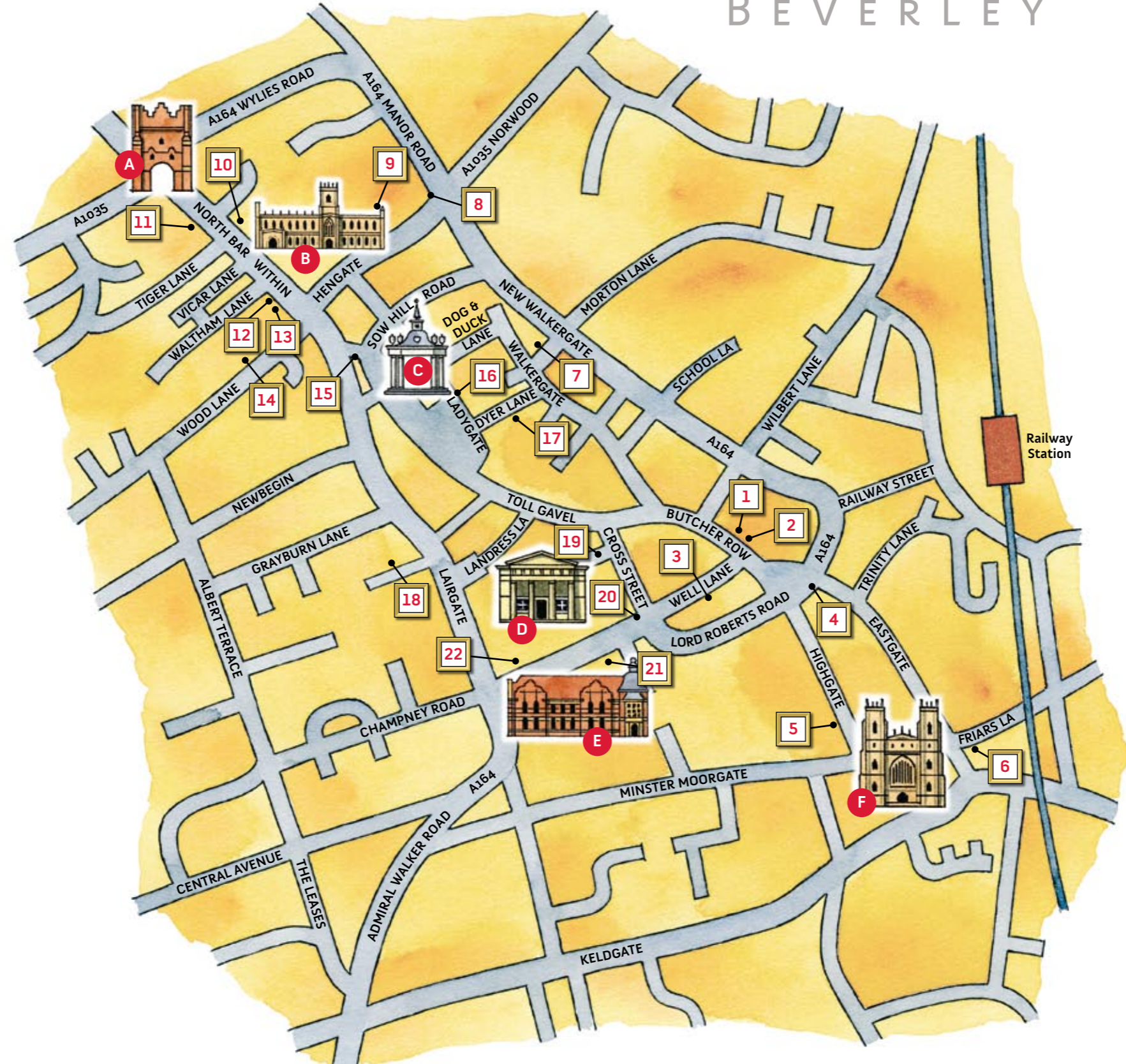
academies in Antwerp and Paris before returning to his home town. With the support of his fellow Beverlonians, Fred's career flourished. In 1914 he married the accomplished artist Mary Dawson Holmes and the couple settled at Bar House, North Bar.

The town and townspeople of Beverley were a constant source of inspiration for both Fred and Mary, and although their work is not confined to regional subjects, local people and places feature significantly.

On his death in 1958, Fred bequeathed a large collection of his paintings, together with a selection by his wife, to Beverley Art Gallery. With the support of Beverley Civic Society, the Elwell collection has been liberated from the confines of the gallery walls! High quality replica paintings can now be seen throughout the town, enabling a wider audience to enjoy the Elwell paintings in settings that proved so inspirational to the artists.

# BEVERLEY

- 1** Frederick W. Elwell R.A. (1870-1958)  
*Old Man with a Pipe*, 1898  
Sponsor: East Riding of Yorkshire Council (Museum Service)
- 2** Frederick W. Elwell R.A. (1870-1958)  
*Seated Nude in the Studio* (or *The Model*), 1935  
Sponsor: The Friends of Beverley Art Gallery
- 3** Frederick W. Elwell R.A. (1870-1958)  
*George Monkman, Mace Bearer of Beverley*, 1890  
Sponsor: Beverley Town Council
- 4** Frederick W. Elwell R.A. (1870-1958)  
*The Launch*, undated  
Sponsor: G. Jack & Son Ltd.
- 5** Frederick W. Elwell R.A. (1870-1958)  
*Harvest Festival Gifts*, undated  
Sponsor: Beverley Lions Club
- 6** Mary Elwell s.w.A. (1874-1952)  
*Beverley Minster from the Friary*, 1934  
Sponsor: Anne and Mike Guest M.B.E.
- 7** Frederick W. Elwell R.A. (1870-1958)  
*Girl with a Kitten*, undated  
Sponsor: Mr. and Mrs. D. Peckett
- 8** Frederick W. Elwell R.A. (1870-1958)  
*The Birthday Party*, 1934  
Sponsor: The Beverley Decorative and Fine Arts Society
- 9** Frederick W. Elwell R.A. (1870-1958)  
*Refugees in my Studio*, 1940  
Sponsor: Mr. and Mrs. G. D. O'Callaghan
- 10** Mary Elwell s.w.A. (1874-1952)  
*At the Mirror* (or *Bedroom, Bar House*), undated  
Sponsor: Wendy Lancaster and Malcolm Shields
- 11** Frederick W. Elwell R.A. (1870-1958)  
*The Last Cab*, c.1931-36  
Sponsor: Beverley Soroptimists



- 12** Frederick W. Elwell R.A. (1870-1958)  
*Preparations*, c.1940-45  
Sponsor: Beverley Arms, Brook Hotels
- 13** Frederick W. Elwell R.A. (1870-1958)  
*Three Maids*, c.1940-45  
Sponsor: Beverley Arms, Brook Hotels
- 14** Frederick W. Elwell R.A. (1870-1958)  
*A Wheelwright's Shop*, 1941  
Sponsor: Michael and Fay Boyle
- 15** Frederick W. Elwell R.A. (1870-1958)  
*Four Friends*, 1920s  
Sponsor: The Friends of Beverley Art Gallery
- 16** Frederick W. Elwell R.A. (1870-1958)  
*Maids with Pigeons* (or *Hilda and Mary*), 1918  
Sponsor: Beverley Renaissance Partnership
- 17** Frederick W. Elwell R.A. (1870-1958)  
*The Butler Takes A Glass of Port* (or *All Things Come To Those Who Wait*), 1890  
Sponsor: Mr. and Mrs. Rixon Matthews
- 18** Frederick W. Elwell R.A. (1870-1958)  
*Leonie's Toilette* (or *Dolls*), 1894  
Sponsor: Barbara English
- 19** Frederick W. Elwell R.A. (1870-1958)  
*The Police Court*, 1938  
Sponsor: Malcolm Shields and Wendy Lancaster
- 20** Frederick W. Elwell R.A. (1870-1958)  
*Brick Bridge, Swine Moor*, c.1939-45  
Sponsor: Longcroft School
- 21** Frederick W. Elwell R.A. (1870-1958)  
*John Edward Champney*, 1906  
Sponsor: East Riding of Yorkshire Council (Museum Service)
- 22** Frederick W. Elwell R.A. (1870-1958)  
*Self-Portrait*, 1933  
Sponsor: Mr. and Mrs. Derek Glenton

## VISIT BEVERLEY ART GALLERY

Come and see the original paintings (we have the largest collection of works by Fred Elwell), together with many other fascinating works in our permanent collection, as well as a variety of temporary exhibitions.

- A** North Bar Without
- B** St. Mary's Church
- C** The Market Cross
- D** Guildhall
- E** Beverley Art Gallery
- F** Beverley Minster

We are very grateful to the owners and occupiers of the various properties for their support of this project, without which it would have been impossible.

