

# The Godmanchester Tour



A view of Island Hall

Godmanchester in Autumn



## The Godmanchester Tour at a glance

**Morning:** Island Hall, Godmanchester

**Lunch:** Wood Green Animal Shelter, Godmanchester

**Afternoon:** Wood Green Animal Shelter, Godmanchester

**Walking requirement:** Very little walking required.

Island Hall is approximately 5 minutes drive from Wood Green Animal Shelter.

## Morning: Island Hall, Godmanchester

Island Hall is a large riverside mansion built of red brick with stone dressings, with a symmetrically designed frontage of seven bays. It was built in the late 1740s by John Jackson Esq, Receiver General of Huntingdon.

To find the Hall by coach, come off at junction 23 on the A14, and drive into Godmanchester. Island Hall is on Post Street, in the centre of town. It is set on the banks of the River Great Ouse, overlooking the ornamental island from which it takes its name. Beyond is Portholme, reputedly the largest water meadow in Britain and designated an area of outstanding natural beauty, which is also of special scientific interest. There is approximately 1.5 acres of formal garden with a large river frontage, and a 2 acre ornamental island in the river, linked to a mainland by a Chinese bridge.

A visit to the house includes an informative tour of the garden.

**Opening times:** May to September (excluding August).  
Times by prior arrangement.

**Average visit time:** One hour to two hours thirty minutes.

**Max. group:** 57

**Coach parking:** At Island Hall the coach can reverse and park in the driveway.

**Contact:** Mr Christopher or Lady Linda Vane Percy on 01480 459676, who will send you an information pack and booking form.

**Catering:** Tea and cakes or lunch can be provided by arrangement.

**Notice required:** 1 month, but it's a private house so it may not always be available for visits; however, the owners will do their best to accommodate you.

**Toilets:** 2 toilets (one on ground level).

**Cost:** Call for details.

**Disabled facilities:** Ramp to the ground floor. Toilet on ground floor. For those with visual impairments, a talk by one of the owners of the house will make for an interesting visit. For those with hearing impairments, there is a detailed leaflet which will provide you with most of the information you will want to know about the house. Visitors with guide dogs welcome. Assistance available.

## Godmanchester and Huntingdon Guided Tour

The group may also like to take a guided tour of Godmanchester and Huntingdon with an experienced tour guide. Email David Cozens at [dam.coz@btinternet.com](mailto:dam.coz@btinternet.com).

A guided tour can be scheduled to your time requirements. Tickets are £2 per adult, £1 per child with a minimum group size of 10.

## Lunch: Wood Green Animal Shelter, Godmanchester

Wood Green's 850 seater restaurant is the perfect location for lunch. Please give one week's notice of your visit. Telephone: 0844 2488181.

## Afternoon: Wood Green Animal Shelter, Godmanchester

Our shelter in Godmanchester is one of the largest animal rehoming centres in Europe and boasts extensive modern animal care facilities including a heated kennel block and purpose built cattery. We also have a coffee shop, pet and gift shop, thrift shop, picnic site, lake, children's play area and recently refurbished water garden. The charity's trading arm also has extensive facilities that are available for hire, ideal for conferences and wedding ceremonies, with all profits from events going back into the care of animals.

The Godmanchester Shelter has a full events list for the year ahead. All details can be found on our website, [www.woodgreen.org.uk](http://www.woodgreen.org.uk)

- Opening times:** All year, Monday to Sunday: 10am - 4pm.  
(Except Christmas Day and Boxing Day).
- Average visit time:** One hour thirty minutes to three hours.
- Max. group:** Over 100 (but if a tour is required, a tour guide can only take a maximum of 30 people at one time).
- Min. group:** No minimum
- Tour:** Maximum of 30 people allowed on a guided tour at one time. Children must be over 10 years old. A donation of £30 is requested.
- Coach parking:** On site and free of charge
- Contact:** 0844 2488181  
[www.woodgreen.org.uk](http://www.woodgreen.org.uk)
- Notice required:** 1 week
- Toilets:** Ample toilet facilities (including wheelchair accessible toilets).
- Cost:** Call for details.
- Disabled facilities:** Hearing loop, visitors with guide dogs welcome, assistance available for disabled customers, accessible parking, colour contrast on walls and doors, wide doorways and walkways for wheelchair access.



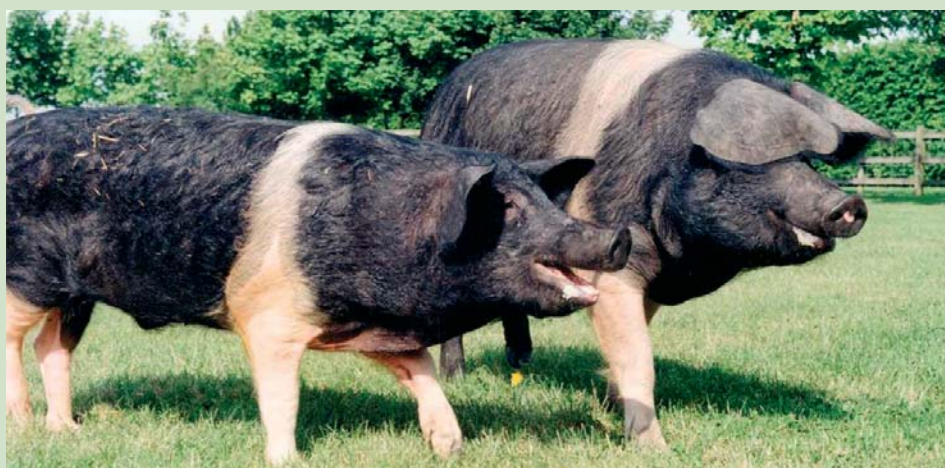
Chinese Bridge, Godmanchester



Portholme, Godmanchester



Godmanchester Bridge



Pigs at Wood Green Animal Shelter

  
Huntingdonshire  
DISTRICT COUNCIL

Please phone each attraction prior to your visit. Thank you.