

Cumbria Tourism Partnership Board

A NEW START

Why?

- Adapt to survive
- Government Policy
- Feedback from partners
- Communication
- Engagement

A Broad Membership

- 'Success' is dependent on a wide range factors
- All having a stake
- Coordination
- Empowerment
- Stronger lobby and policy

To summarise...

- Celebrate Progress
- Issues and concerns
- Learning
- Co-ordination
- Proposals
- Public sector investment
- CT Executive Board and Working Groups

**Cumbria
Local Enterprise
Partnership**

**CT
Commercial
Members
Group**

**CT
Partnership
Board**

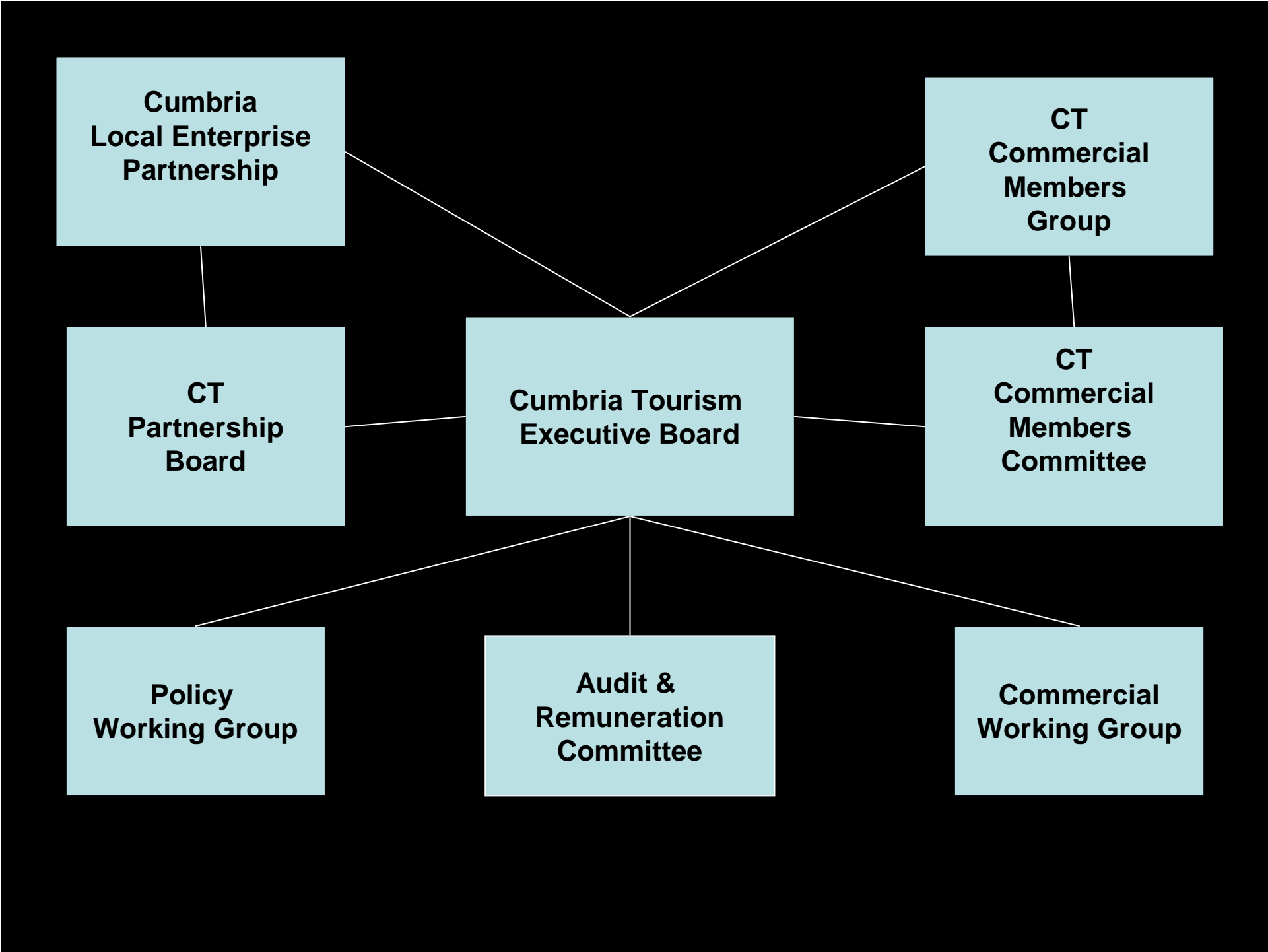
**Cumbria Tourism
Executive Board**

**CT
Commercial
Members
Committee**

**Policy
Working Group**

**Audit &
Remuneration
Committee**

**Commercial
Working Group**



What Next?

- Organisations missing from Partnership
- Consider any changes to TOR
- Agree frequency and dates of meetings
- Combine Annual Summit, AGMs, Partnership event with Annual Awards Dinner or Taste Cumbria Gala Dinner?

Any questions?